



WEWOOD

PORTUGUESE JOINERY



RETAIL RECOMMENDED PRICE LIST 2026

ENGLISH / GBP EXCL. VAT

V.02.0. 2026

INDEX

ACCESSORIES pp. 4 - 5

CANCAN p. 5

LUNA p. 5

SIXTY'S p. 5

BEDS pp. 6 - 7

NORAY p. 7

PLATFORM p. 7

BOOKSHELVES pp. 8 - 11

X2 p. 9

PATH p. 9 - 11

DESKS & CONSOLES p. 12 - 13

METIS p. 13

BRIDGE p. 13

RE-FORM p. 13

SEATING pp. 14 - 22

OPERA p. 15

NOOK p. 15

VIO p. 15

CARAVELA p. 16

NIDO p. 16

DEGAS p. 17

BOTERO p. 17

PALA p. 17

ORCA p. 17

KUNDERA p. 17

KOBE p. 18

LOOP p. 18

MULTIBANQUETA p. 18

SCAFFOLD p. 20

BOWIE p. 20

DOME p. 21 - 22

TABLES pp. 23 - 26

RAIA p. 24

SOMA p. 24

AMOS p. 24

ANCHOR p. 24

VASCO p. 24

NURIA p. 24

KAYA p. 25

ANCHOR p. 25

HEXA p. 25

MEMÓRIA p. 25

CORNER p. 25

AMOS p. 26

RE-FORM p. 26

DUPLEX p. 26

TRIPLEX p. 26

CRIADO-MUDO p. 26

STORAGE pp. 27 - 29

BRUTALIST p. 28

SCARPA p. 28

CAROUSEL p. 28

RADIO p. 28

MISTER p. 28

TOUCH p. 28

CONTADOR II p. 29

CONTADOR SPECIAL p. 29

DOUBLE p. 29

MATERIALS & COLORS pp. 31 - 52

TERMS & CONDITIONS pp. 54 - 61

ACCESSORIES



ACCESSORIES


CANCAN COAT STAND ●●

MADE OF FOUR PIECES IN SOLID WOOD TIED WITH LEATHER ROPE. THE CUT ON THE EDGE OF EACH POLE ALLOWS TO SAFELY HANG COATS.

DESIGNER STUDIO GUD

REFERENCES

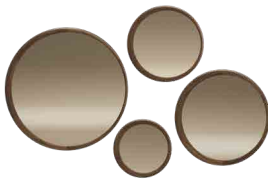
WCBGU001C OAK
WCBGU001N WALNUT

DIMENSIONS

W 465 H 1700 D 450MM

PRICE*

1170£
1489£


LUNA MIRRORS ●●

FOUR DIFFERENT SIZED MIRRORS. WOODEN FRAME IN OAK OR WALNUT AND A BRONZE OR NORMAL MIRROR.

DESIGNER ELEONORA FEDI

REFERENCES

WEDEF003C Ø 450 OAK
WEDEF003N Ø 450 WALNUT
WEDEF002C Ø 600 OAK
WEDEF002N Ø 600 WALNUT
WEDEF004C Ø 900 OAK
WEDEF004N Ø 900 WALNUT
WEDEF001C Ø 1200 OAK
WEDEF001N Ø 1200 WALNUT

PRICE*

674£
917£
866£
1128£
1072£
1498£
1292£
1657£


SIXTY'S MIRRORS ●●

THREE DIFFERENT SIZED MIRRORS WITH WOOD FRAME AND A BRONZE OR NORMAL MIRROR. IT'S THE PERFECT PIECE FOR ANY ROOM, VERTICAL OR HORIZONTALLY.

DESIGNER WEWOOD DESIGN CENTER

REFERENCES

WEDWW001C 700 OAK
WEDWW001N 700 WALNUT
WEDWW002C 1150 OAK
WEDWW002N 1150 WALNUT
WEDWW003C 1800 OAK
WEDWW003N 1800 WALNUT

DIMENSIONS

W 700 H 700 D 50MM
W 655 H 1150 D 50MM
W 700 H 1800 D 50MM

PRICE

1179£
1517£
1470£
1638£
1704£
2059£

BEDS



BEDS


NORAY BED

A CONTEMPORARY SCULPTURAL BED, COMPOSED OF SOFT, ROUNDED VOLUMES THAT RADIATE COMFORT AND COZINESS.
MATRESS NOT INCLUDED.

DESIGNER ERNO DIERCKX

 FABRIC CONSUMPTION: **1600** 4,50 M | **1800** 5,00 M | **2000** 5,50 M

 LEATHER CONSUMPTION: **1600** 10,00 M² | **1800** 10,00 M² | **2000** 10,00 M²
 CONSIDERING 1.40M WIDE FABRIC ROLL

REFERENCES

WCMDX001C OAK 1600 COM
WCMDX001N WALNUT 1600 COM
WCMDX002C OAK 1800 COM
WCMDX002N WALNUT 1800 COM
WCMDX003C OAK 2000 COM
WCMDX003N WALNUT 2000 COM

PRICE

4660£
 5265£
 4793£
 5432£
 4941£
 5742£

DIMENSIONS

W 2070 H 970 D 2305MM
 W 2270 H 970 D 2305MM
 W 2470 H 970 D 2305MM

1600	A	B	C	L
OAK	5029£	5345£	5900£	6640£
WALNUT	5634£	5950£	6504£	7245£

1800	A	B	C	L
OAK	5202£	5553£	6170£	6773£
WALNUT	5841£	6192£	6809£	7412£

2000	A	B	C	L
OAK	5392£	5778£	6456£	6921£
WALNUT	6193£	6579£	7257£	7722£


PLATFORM BED

BED AVAILABLE IN THREE SIZES. CAN BE PERSONALIZED WITH A SELECTION OF FINE WOODS AND TEXTILE OPTIONS.
MATRESS NOT INCLUDED.

DESIGNER CHRISTIAN HAAS

 FABRIC CONSUMPTION: **1600** 2,6 M | **1800** 2,8 M | **2000** 2,9 M

 LEATHER CONSUMPTION: **1600** 4,37 M² | **1800** 4,7 M² | **2000** 4,9 M²
 CONSIDERING 1.40M WIDE FABRIC ROLL

REFERENCES

WCMCH001C OAK 1600 COM
WCMCH001N WALNUT 1600 COM
WCMCH002C OAK 1800 COM
WCMCH002N WALNUT 1800 COM
WCMCH003C OAK 2000 COM
WCMCH003N WALNUT 2000 COM

PRICE*

5247£
 5544£
 5851£
 6148£
 6603£
 6900£

DIMENSIONS

W 2010 H 890 D 2535MM
 W 2210 H 890 D 2535MM
 W 2410 H 890 D 2535MM

1600	A	B	C	L
OAK	5460£	5642£	5963£	6112£
WALNUT	5757£	5939£	6260£	6409£

1800	A	B	C	L
OAK	6080£	6277£	6622£	6782£
WALNUT	6377£	6574£	6919£	7079£

2000	A	B	C	L
OAK	6849£	7060£	7430£	7574£
WALNUT	7146£	7357£	7727£	7871£

*CUSTOMS FEES NOT INCLUDED

BOOKSHELVES



BOOKSHELVES


X2 BOOKSHELF ●●

BOOKSHELF IN SOLID WOOD, FULLY CUSTOMIZABLE. ALLOWS TO INCREASE THE WIDTH AND HEIGHT ANYTIME AND CREATING SO NEW COMPARTMENTS TO STORAGE ANY ITEMS.

DESIGNER LAURINDO MARTA

REFERENCES

WETLM001C OAK
WETLM001N WALNUT

DIMENSIONS
W 1500 H 1500 D 300MM

PRICE*

2522£
3384£


PATH SHELVING SYSTEM ●●

MODULAR WOODEN SHELVING SYSTEM DESIGNED FOR VERSATILITY, COMBINING SHELVES AND STORAGE BOXES TO MAXIMIZE SPACE WHILE MAINTAINING AN OPEN, ARCHITECTURAL AESTHETIC.

DESIGNER DAN YEFFET

REFERENCES

SHELVES

WETDY001C SMALL SHELF OAK
WETDY001N SMALL SHELF WALNUT
WETDY002C LARGE SHELF OAK
WETDY002N LARGE SHELF WALNUT

CABINETS

WETDY003C SMALL CABINET OAK
WETDY003N SMALL CABINET WALNUT
WETDY004C SMALL CABINET SLATED OAK
WETDY004N SMALL CABINET SLATED WALNUT
WETDY005C MEDIUM CABINET OAK
WETDY005N MEDIUM CABINET WALNUT
WETDY006C MEDIUM CABINET SLATED OAK
WETDY006N MEDIUM CABINET SLATED WALNUT
WETDY007C LARGE CABINET OAK
WETDY007N LARGE CABINET WALNUT
WETDY008C LARGE CABINET SLATED OAK
WETDY008N LARGE CABINET SLATED WALNUT

MODULES

WETDY009C SMALL MODULE OAK (WITHOUT SLITS)
WETDY009N SMALL MODULE WALNUT (WITHOUT SLITS)
WETDY010C SMALL MODULE OAK (ONE SIDE SLITS)
WETDY010N SMALL MODULE WALNUT (ONE SIDE SLITS)
WETDY011C SMALL MODULE OAK (TWO SIDE SLITS)
WETDY011N SMALL MODULE WALNUT (TWO SIDE SLITS)
WETDY012C TALL MODULE OAK (WITHOUT SLITS)
WETDY012N TALL MODULE WALNUT (WITHOUT SLITS)
WETDY013C TALL MODULE OAK (ONE SIDE SLITS)
WETDY013N TALL MODULE WALNUT (ONE SIDE SLITS)
WETDY014C TALL MODULE OAK (TWO SIDE SLITS)
WETDY014N TALL MODULE WALNUT (TWO SIDE SLITS)
WETDY015C TALL MODULE OAK (ONE SIDE UPPER SLITS)
WETDY015N TALL MODULE WALNUT (ONE SIDE UPPER SLITS)
WETDY016C TALL MODULE OAK (TWO SIDE UPPER SLITS)
WETDY016N TALL MODULE WALNUT (TWO SIDE UPPER SLITS)
WETDY017T TOP COVER TRAVERTINE

PRICE

183£
192£
203£
262£
365£
412£
464£
506£
604£
664£
772£
861£
800£
889£
968£
1081£

DIMENSIONS

SHELVES

SMALL SHELF W 1020 H 20 D 416MM
LARGE SHELF W 1360 H 20 D 416MM

CABINETS

SMALL CABINET W 500 H 348 D 325MM
MEDIUM CABINET W 860 H 348 D 325MM

LARGE CABINET W 1200 H 348 D 325MM

MODULE

SMALL MODULE W 230 H 262 D 420MM
TALL MODULE W 230 H 520 D 420MM
TOP COVER W 210 H 20 D 400MM

BOOKSHELVES



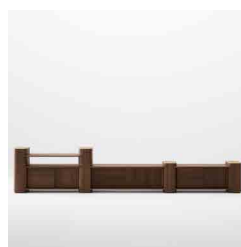
SET 1

INCLUDES

- 4*SMALL SHELF
- 2*LARGE SHELF
- 2*MEDIUM CABINET
- 1*LARGE CABINET SLATED
- 2*TALL MODULE (ONE SIDE SLITS)
- 2*TALL MODULE (TWO SIDE SLITS)
- 4*TOP COVER TRAVERTINE

DIMENSIONS
TOTAL: W 3900 H 520 D 420MM

OAK: 6481£
WALNUT: 7394£



SET 2

INCLUDES

- 5*SMALL SHELF
- 2*LARGE SHELF
- 2*MEDIUM CABINET
- 1*LARGE CABINET SLATED
- 2*SMALL MODULE (ONE SIDE SLITS)
- 2*TALL MODULE (ONE SIDE SLITS)
- 2*TALL MODULE (TWO SIDE SLITS)
- 4*TOP COVER TRAVERTINE

DIMENSIONS
TOTAL: W 3900 H 762 D 420MM

OAK: 7668£
WALNUT: 8946£



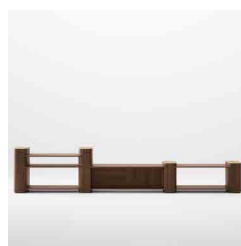
SET 3

INCLUDES

- 5*SMALL SHELF
- 2*LARGE SHELF
- 2*MEDIUM CABINET
- 1*LARGE CABINET SLATED
- 2*SMALL MODULE (ONE SIDE SLITS)
- 2*TALL MODULE (ONE SIDE SLITS)
- 2*TALL MODULE (TWO SIDE SLITS)
- 4*TOP COVER TRAVERTINE

DIMENSIONS
TOTAL: W 3900 H 762 D 420MM

OAK: 7668£
WALNUT: 8946£



SET 4

INCLUDES

- 5*SMALL SHELF
- 2*LARGE SHELF
- 1*LARGE CABINET SLATED
- 2*SMALL MODULE (ONE SIDE SLITS)
- 2*TALL MODULE (ONE SIDE SLITS)
- 2*TALL MODULE (TWO SIDE SLITS)
- 4*TOP COVER TRAVERTINE

DIMENSIONS
TOTAL: W 3900 H 762 D 420MM

OAK: 6663£
WALNUT: 7617£



SET 5

INCLUDES

- 6*SMALL SHELF
- 2*LARGE SHELF
- 1*LARGE CABINET SLATED
- 4*SMALL MODULE (ONE SIDE SLITS)
- 2*TALL MODULE (ONE SIDE SLITS)
- 2*TALL MODULE (TWO SIDE SLITS)
- 4*TOP COVER TRAVERTINE

DIMENSIONS
TOTAL: W 3900 H 762 D 420MM

OAK: 8035£
WALNUT: 9170£



SET 6

INCLUDES

- 8*SMALL SHELF
- 4*LARGE SHELF
- 2*SMALL CABINET
- 2*MEDIUM CABINET
- 1*LARGE CABINET SLATED
- 4*SMALL MODULE (WITHOUT SLITS)
- 4*TALL MODULE (ONE SIDE SLITS)
- 4*TALL MODULE (TWO SIDE SLITS)
- 4*TOP COVER TRAVERTINE

DIMENSIONS
TOTAL: W 3900 H 1262 D 420MM

OAK: 13562£
WALNUT: 15608£



SET 7

INCLUDES

- 8*SMALL SHELF
- 4*LARGE SHELF
- 1*SMALL CABINET
- 1*LARGE CABINET SLATED
- 4*SMALL MODULE (WITHOUT SLITS)
- 4*TALL MODULE (ONE SIDE SLITS)
- 4*TALL MODULE (TWO SIDE SLITS)
- 4*TOP COVER TRAVERTINE

DIMENSIONS
TOTAL: W 3900 H 1262 D 420MM

OAK: 11989£
WALNUT: 13867£



SET 8

INCLUDES

- 10*SMALL SHELF
- 4*LARGE SHELF
- 2*SMALL CABINET
- 2*MEDIUM CABINET
- 1*LARGE CABINET SLATED
- 6*SMALL MODULE (WITHOUT SLITS)
- 6*TALL MODULE (ONE SIDE SLITS)
- 4*TALL MODULE (TWO SIDE SLITS)
- 4*TOP COVER TRAVERTINE

DIMENSIONS
TOTAL: W 3900 H 2004 D 420MM

OAK: 13453£
WALNUT: 16061£

BOOKSHELVES


SET 9 ●●

INCLUDES

10*SMALL SHELF
 4*LARGE SHELF
 2*SMALL CABINET
 2*MEDIUM CABINET
 1*LARGE CABINET SLATED
 6*SMALL MODULE (WITHOUT SLITS)
 6*TALL MODULE (ONE SIDE SLITS)
 4*TALL MODULE (TWO SIDE SLITS)
 4*TOP COVER TRAVERTINE

DIMENSIONS

TOTAL: W 3900 H 2004 D 420MM

OAK: 13453£
 WALNUT: 16061£


SET 10 ●●

INCLUDES

12*SMALL SHELF
 4*LARGE SHELF
 2*SMALL CABINET
 2*MEDIUM CABINET
 1*LARGE CABINET SLATED
 8*SMALL MODULE (WITHOUT SLITS)
 8*TALL MODULE (ONE SIDE SLITS)
 4*TALL MODULE (TWO SIDE SLITS)
 4*TOP COVER TRAVERTINE

DIMENSIONS

TOTAL: W 3900 H 2004 D 420MM

OAK: 16349£
 WALNUT: 19397£


SET 11 ●●

INCLUDES

12*SMALL SHELF
 6*LARGE SHELF
 2*SMALL CABINET
 2*MEDIUM CABINET
 1*LARGE CABINET SLATED
 8*SMALL MODULE (WITHOUT SLITS)
 6*TALL MODULE (ONE SIDE SLITS)
 6*TALL MODULE (TWO SIDE SLITS)
 4*TOP COVER TRAVERTINE

DIMENSIONS

TOTAL: W 3900 H 2004 D 420MM

OAK: 19896£
 WALNUT: 22886£


SET 12 ●●

INCLUDES

12*SMALL SHELF
 6*LARGE SHELF
 2*SMALL CABINET
 8*SMALL MODULE (WITHOUT SLITS)
 6*TALL MODULE (ONE SIDE SLITS)
 6*TALL MODULE (TWO SIDE SLITS)
 4*TOP COVER TRAVERTINE

DIMENSIONS

TOTAL: W 3900 H 2004 D 420MM

OAK: 17720£
 WALNUT: 20476£


SET 13 ●●

INCLUDES

12*SMALL SHELF
 6*LARGE SHELF
 8*SMALL MODULE (WITHOUT SLITS)
 6*TALL MODULE (ONE SIDE SLITS)
 6*TALL MODULE (TWO SIDE SLITS)
 4*TOP COVER TRAVERTINE

DIMENSIONS

TOTAL: W 3900 H 2004 D 420MM

OAK: 16990£
 WALNUT: 19652£

DESKS & CONSOLES



DESKS AND CONSOLES


METIS DESK ●●

COMPACT DESK MADE OF SOLID WOOD, OFFERING A REAL STORAGE SOLUTION WITH THREE DRAWERS, ONE SECRET COMPARTMENT AND TWO LIDDED SECTIONS.

DESIGNER GONALO CAMPOS

REFERENCES

WSCGC001C OAK
WSCGC001N WALNUT

DIMENSIONS
W 1400 H 750 D 755MM

PRICE*

5090£
6683£


BRIDGE DESK ●●

ROUNDED SURFACES AND AN OVERALL MINIMALIST AESTHETIC DESK MADE FROM OAK OR WALNUT WITH METAL ARCS THAT SPAN THE LEGS.

DESIGNER CHRISTOPHE DE SOUSA

REFERENCES

WSCCS001C OAK
WSCCS001N WALNUT

DIMENSIONS
W 1200 H 740 D 710MM

PRICE*

3474£
4788£


RE-FORM CONSOLE ●●

CONSOLE AVAILABLE IN TWO MODULES OF DIFFERENT SIZES. IT SKILLFULLY MELTS DISTINCT ELEMENTS TO CRAFT COHESIVE WHOLE AND UNEXPECTED, EVOLVING COMBINATIONS.

DESIGNER ALAIN GILLES

REFERENCE

WSCAG001C OAK SMALL
WSCAG001N WALNUT SMALL
WSCAG002C OAK LARGE
WSCAG002N WALNUT LARGE

DIMENSIONS
D 500 D 800 D 400MM
W 800 D 800 D 400MM

PRICE*

1035£
1251£
1287£
1467£

SEATING



PLEASE NOTE:

DUE TO THE WIDE RANGE OF STATE-OF-THE-ART FABRICS AND LEATHER THAT WE NOW HAVE IN OUR COLLECTION, WE HAVE DIVIDED IT IN FOUR GROUPS (A, B, C, FOR FABRICS AND L FOR LEATHER). THE FABRICS AND LEATHER MUST BE CHOSEN ON PAGES 34 - 51. THERE IS ALWAYS THE POSSIBILITY OF COM.

CHAIRS


OPERA_CHAISE LONGUE ●

OPERA IS A CLASSIC, TIMELESS, SOPHISTICATED PIECE THAT INVITES TO RELAX. AVAILABLE IN WALNUT AND BLACK LEATHER.

DESIGNER FABRICIO RONCA

LEATHER CONSUMPTION: 10,00 M²

REFERENCES

WCDSR04N WALNUT / LEATHER

PRICE

4158£

DIMENSIONS

W 625 H 870 D 1890MM


NOOK CHAIR ●●

NOOK IS A ROBUST, DURABLE AND COMFORTABLE CHAIR WITH A WOODEN BASE AND A NATURAL LEATHER SEAT AVAILABLE IN THREE COLOURS.

DESIGNER RAFAEL OLIVA

LEATHER CONSUMPTION: 2,00 M²

REFERENCES

WCDRO001C OAK / LEATHER

WCDRO001N WALNUT / LEATHER

PRICE

1309£

1647£

DIMENSIONS

W 530 H 880 D 520MM


NOOK LOUNGE CHAIR ●●

NOOK LOUNGE CHAIR IS THE LOUNGE VERSION OF NOOK CHAIR. ROBUST, DURABLE AND COMFORTABLE CHAIR WITH A WOODEN BASE AND A NATURAL LEATHER SEAT AVAILABLE IN THREE COLOURS.

DESIGNER RAFAEL OLIVA

LEATHER CONSUMPTION: 2,00 M²

REFERENCES

WCDRO002C OAK / LEATHER

WCDRO002N WALNUT / LEATHER

PRICE

1386£

1733£

DIMENSIONS

W 590 H 970 D 625MM


VIO CHAIR ●●

VIO IS A VERSATILE WOODEN CHAIR, AVAILABLE IN UPHOLSTERED OR NON-UPHOLSTERED VERSIONS.

DESIGNER CHRISTIAN HAAS

FABRIC CONSUMPTION: 1,00 M
LEATHER CONSUMPTION: 1,00 M²

REFERENCES

WCDCH03C OAK

WCDCH03N WALNUT

WCDCH04C OAK COM

WCDCH04N WALNUT COM

PRICE

428£

706£

482£

760£

DIMENSIONS

W 480 H 815 D 520MM

	A	B	C	L
OAK	563£	634£	757£	680£
WALNUT	842£	912£	1035£	958£


VIO ARMCHAIR ●●

VIO IS A VERSATILE WOODEN ARMCHAIR, AVAILABLE IN UPHOLSTERED OR NON-UPHOLSTERED VERSIONS.

DESIGNER CHRISTIAN HAAS

FABRIC CONSUMPTION: 1,00 M
LEATHER CONSUMPTION: 1,00 M²

REFERENCES

WCDCH05C OAK

WCDCH05N WALNUT

WCDCH06C OAK COM

WCDCH06N WALNUT COM

PRICE

558£

806£

612£

956£

DIMENSIONS

W 560 H 815 D 520MM

	A	B	C	L
OAK	771£	849£	986£	900£
WALNUT	1047£	1125£	1262£	1176£

*CUSTOMS FEES NOT INCLUDED

CHAIRS



CARAVELA CHAIR ●●

ROBUST AND ELEGANT CHAIR FULLY UPHOLSTERED WITH GREAT COMFORT.

DESIGNER GONALO CAMPOS

FABRIC CONSUMPTION: 1 M
LEATHER CONSUMPTION: 1,68 M²

REFERENCES

WCDGC001C OAK COM
WCDGC001N WALNUT COM

PRICE*

563€
684€

DIMENSIONS

W 540 H 800 D 610MM

	A	B	C	L
OAK	644€	715€	838€	896€
WALNUT	766€	836€	959€	1017€



CARAVELA BAR STOOL ●●

FULLY UPHOLSTERED STOOL WITH GREAT COMFORT. PART OF A FAMILY OF CHAIRS.

DESIGNER GONALO CAMPOS

FABRIC CONSUMPTION: 1 M
LEATHER CONSUMPTION: 1,68 M²

REFERENCES

WCDGC002C OAK COM
WCDGC002N WALNUT COM
WCDGC007C OAK COM
WCDGC007N WALNUT COM

PRICE*

629€
806€
629€
806€

DIMENSIONS

W 465 H 990 D 565MM
W 450 H 880 D 510MM

	A	B	C	L
OAK	711€	781€	905€	962€
WALNUT	887€	958€	1081€	1139€



CARAVELA LOUNGE CHAIR

COMFORTABLE LOUNGE CHAIR WITH LEGS IN SOLID WOOD. THE FABRIC CAN BE CUSTOMIZED

DESIGNER GONALO CAMPOS

FABRIC CONSUMPTION: 2 M
LEATHER CONSUMPTION: 3,36 M²

REFERENCES

WCDGC003C OAK COM
WCDGC003N WALNUT COM

PRICE*

738€
828€

DIMENSIONS

W 580 H 760 D 675MM

	A	B	C	L
OAK	902€	1042€	1289€	1403€
WALNUT	992€	1132€	1379€	1493€



NIDO ARMCHAIR ●●

COMPACT ARMCHAIR WITH STRONG SCULPTURAL PRESENCE. SOFT CURVES AND LEGS IN SOLID WOOD.

DESIGNER CHRISTIAN HAAS

FABRIC CONSUMPTION: 2,5 M
LEATHER CONSUMPTION: 4,20 M²

REFERENCES

WCDCH001C OAK COM
WCDCH001N WALNUT COM

PRICE*

666€
864€

DIMENSIONS

W 680 H 745 D 590MM

	A	B	C	L
OAK	871€	1047€	1355€	1498€
WALNUT	1069€	1245€	1553€	1696€



NIDO LOUNGE CHAIR ●●

COMPACT LOUNGE CHAIR WITH STRONG SCULPTURAL PRESENCE. SOFT CURVES AND EXPRESSIVE BASE IN SOLID WOOD.

DESIGNER CHRISTIAN HAAS

FABRIC CONSUMPTION: 3,5 M
LEATHER CONSUMPTION: 5,88 M²

REFERENCES

WCDCH002C OAK COM
WCDCH002N WALNUT COM

PRICE*

1782€
2385€

DIMENSIONS

W 815 H 745 D 700MM

	A	B	C	L
OAK	2069€	2086€	2333€	2947€
WALNUT	2672€	2689€	2936€	3550€

CHAIRS


DEGAS CHAIR ●●

CHAIR CRAFTED FROM SOLID WOOD, WITH INTRICATE DETAILING ON ITS LEGS AND BACKREST, COMPLEMENTED BY A SELECTION OF PREMIUM FABRICS AND LEATHER UPHOLSTERY.

DESIGNER FABRICIO RONCA

FABRIC CONSUMPTION: 1,00 M
LEATHER CONSUMPTION: 1,68 M²

REFERENCES

WCDSR001C OAK COM
WCDSR001N WALNUT COM

PRICE

583£
828£

DIMENSIONS
W 520 H 815 D 550MM

	A	B	C	L
OAK	665£	735£	859£	916£
WALNUT	910£	980£	1103£	1161£


BOTERO LOUNGE CHAIR ●●

LOUNGE CHAIR BUILT WITH A SOLID WOOD FRAME AND UPHOLSTERED IN PREMIUM NATURAL LEATHER.

DESIGNER FABRICIO RONCA

FABRIC CONSUMPTION: 1,50 M
LEATHER CONSUMPTION: 5,00 M²

REFERENCES

WCDSR002C OAK COM
WCDSR002N WALNUT COM
WCDSR002CP OAK/LEATHER
WCDSR002NP WALNUT/LEATHER

PRICE

1437£
1994£
2828£
3383£

DIMENSIONS
W 725 H 750 D 790MM


PALA CHAIR ●●

PRACTICAL AND COMFORTABLE CHAIR WITH ENVELOPING ELBOW REST AND UPHOLSTERED SEAT PAD.

DESIGNER RAMOS & BASSOLS

FABRIC CONSUMPTION: 1 M
LEATHER CONSUMPTION: 1,68 M²

REFERENCES

WCDB001C OAK COM
WCDB001N WALNUT COM

PRICE*

1121£
1283£

DIMENSIONS
W 565 H 760 D 540MM

	A	B	C	L
OAK	1203£	1274£	1397£	1454£
WALNUT	1365£	1436£	1559£	1616£


ORCA CHAIR ●●

STRONG AND LIGHT CHAIR, AVAILABLE IN OAK OR WALNUT AND WITH UPHOLSTERED SEAT PAD. ASSEMBLED WITH NO SCREWS OR METAL FITTINGS.

DESIGNER STUDIO GUD

REFERENCES

WCDGU001C OAK
WCDGU001N WALNUT
WCDGU001CP OAK/LEATHER
WCDGU001NP WALNUT/LEATHER

PRICE*

1053£
1310£
1170£
1423£

DIMENSIONS
W 450 H 775 D 560MM


KUNDERA ARMCHAIR ●●

SOLID WOOD CHAIR, AVAILABLE IN OAK OR WALNUT. ALSO AVAILABLE WITH UPHOLSTERED SEATPAD.

DESIGNER STUDIO GUD

REFERENCES

WCDGU002C OAK
WCDGU002N WALNUT
WCDGU004C OAK COM
WCDGU004N WALNUT COM

PRICE*

772£
1132£
908£
1236£

DIMENSIONS
W 555 H 760 D 525MM

	A	B	C	L
OAK	990£	1060£	1184£	1241£
WALNUT	1318£	1388£	1511£	1569£

FABRIC CONSUMPTION: 1 M
LEATHER CONSUMPTION: 1,68 M²

CHAIRS



KOBE CHAIR ●●

INTERCONNECTED CHAIR WITH A SOLID WOOD FRAME, ELEGANT. COMFORTABLE, STABLE AND ROBUST.

DESIGNER DANIEL SOUSA

FABRIC CONSUMPTION: 1 M
LEATHER CONSUMPTION: 1,68 M²

REFERENCES

WCDDS001C OAK COM
WCDDS001N WALNUT COM

PRICE*

1035€
1341€

DIMENSIONS

W 570 H 770 D 555MM

	A	B	C	L
OAK	1117€	1187€	1310€	1368€
WALNUT	1423€	1493€	1616€	1674€



LOOP LOUNGE CHAIR ●

ELEGANT AND COMFORTABLE UPHOLSTERED LOUNGE CHAIR WITH SOLID WOOD FRAME.

DESIGNER DAVID GIRELLI

FABRIC CONSUMPTION: 4 M
LEATHER CONSUMPTION: 6,72 M²

REFERENCES

WCDDG001C OAK COM

PRICE*

2142€

DIMENSIONS

W 1035 H 735 D 770MM

	A	B	C	L
OAK	2398€	2678€	3172€	3400€



MULTIBANQUETA STOOL ●●

MULTIPURPOSE PIECE IN SOLID OAK OR WALNUT. A STOOL THAT HAS THE POSSIBILITY OF BECOMING AN ENDLESS BENCH, A SIDE OR COFFEE TABLE.

DESIGNER SURICATA DESIGN STUDIO

REFERENCES

WBCSD102C OAK
WBCSD102N WALNUT

PRICE*

618€
787€

DIMENSIONS

W 490 H 450 D 300MM

SOFAS



PLEASE NOTE:

DUE TO THE WIDE RANGE OF STATE-OF-THE-ART FABRICS AND LEATHER THAT WE NOW HAVE IN OUR COLLECTION, WE HAVE DIVIDED IT IN FOUR GROUPS (A, B, C, FOR FABRICS AND L FOR LEATHER). THE FABRICS AND LEATHER MUST BE CHOSEN ON PAGES 34 - 51. THERE IS ALWAYS THE POSSIBILITY OF COM.

SOFAS



SCAFFOLD SOFA ●●

COMFORTABLE SOFA WITH SURROUNDING WOODEN FRAME IN SOLID WOOD. A SOFA, A BOOKSHELF AND ALSO A DIVIDER, PERFECT FOR AN EXCLUSIVE SPACE. THE PILLOWS EASILY COME OFF AND CAN BE REPLACED.

DESIGNER ANDRÉ TEOMAN STUDIO

FABRIC CONSUMPTION: 15 M
LEATHER CONSUMPTION: 25,2 M²

REFERENCES

WSFAT001C OAK COM
WSFAT001N WALNUT COM

PRICE*

7301€
8705€

DIMENSIONS

W 2600 H 756 D 1050MM

	A	B	C	L
OAK	8529€	9582€	11432€	12290€
WALNUT	9933€	10986€	12836€	13694€



BOWIE SOFA ●●

MODULAR SOFA WITH AN IRON AND WOOD STRUCTURE. THE MEMORY FOAM KEEPS THE SOFT AND CLEAN LINES OF THE SOFA, EVEN WITH INTENSE USE. ITS DIMENSIONS CAN VARY BETWEEN A SINGLE ARMCHAIR SEAT, TO A 3 SEAT WIDE SOFA.

DESIGNER GONÇALO CAMPOS

FABRIC CONSUMPTION: **3 SEATS** 10,5 M | **2 SEATS** 8,5 M | **1 SEAT** 5,5 M | **OTTOMAN** 1,6 M

LEATHER CONSUMPTION: **3 SEATS** 17,64 M² | **2 SEATS** 14,28 M² | **1 SEAT** 9,24 M² | **OTTOMAN** 2,69 M²

REFERENCES

WSFGC003C 3 SEATS OAK COM
WSFGC003N 3 SEATS WALNUT COM
WSFGC002C 2 SEATS OAK COM
WSFGC002N 2 SEATS WALNUT COM
WSFGC001C 1 SEAT OAK COM
WSFGC001N 1 SEAT WALNUT COM
WSFGC000C OTTOMAN OAK COM
WSFGC000N OTTOMAN WALNUT COM

PRICE*

4961€
4961€
4474€
4474€
2456€
2456€
1363€
1363€

DIMENSIONS

3 SEATS W 3005 H 750 D 900MM
2 SEATS W 2200 H 750 D 900MM
1 SEATS W 1130 H 750 D 900MM
OTTOMAN W 900 H 420 D 900MM

3 SEATS	A	B	C	L
OAK	5821€	6558€	7853€	8454€
WALNUT	5821€	6558€	7853€	8454€

2 SEATS	A	B	C	L
OAK	5171€	5767€	6815€	7302€
WALNUT	5171€	5767€	6815€	7302€

1 SEATS	A	B	C	L
OAK	2907€	3293€	3971€	4286€
WALNUT	2907€	3293€	3971€	4286€

OTTOMAN	A	B	C	L
OAK	1494€	1606€	1804€	1895€
WALNUT	1494€	1606€	1804€	1895€

SOFAS


DOME SOFA

MODULAR SOFA, WITH REMOVABLE COVERS, COMPOSED BY A SET OF SIX COMPONENTS: AN OTTOMAN, AN ONE SEATER MODULE AND A CHAISE LONGUE, AS WELL AS A COMPLEMENTARY WOODEN CORNER MODULE, A CENTER MODULE AND A SIDE MODULE.

DESIGNER ERNO DIERCKX

FABRIC CONSUMPTION: **1 SEAT** 4 M | **CHAISE LONGUE** 5,5 M | **OTTOMAN** 2,9 M

LEATHER CONSUMPTION: **1 SEAT** 6,72 M² | **CHAISE LONGUE** 9,24 M² | **OTTOMAN** 4,87 M²

1 SEATS	A	B	C	L
OAK	1966£	2246£	2740£	2968£
WALNUT	2036£	2317£	2810£	3038£

OTTOMAN	A	B	C	L
OAK	1417£	1620£	1977£	2143£
WALNUT	1487£	1690£	2048£	2213£

REFERENCES

REFERENCES	PRICE
WSFED001C 1 SEAT OAK COM	1638£
WSFED001N 1 SEAT WALNUT COM	1708£
WSFED002C CHAISE LONGUE OAK COM	2012£
WSFED002N CHAISE LONGUE WALNUT COM	2106£
WSFED003C OTTOMAN OAK COM	1179£
WSFED003N OTTOMAN WALNUT COM	1249£
WSFED004C CENTER MODULE OAK	1360£
WSFED004N CENTER MODULE WALNUT	1390£
WSFED005C SIDE MODULE OAK	632£
WSFED005N SIDE MODULE WALNUT	744£
WSFED006C CORNER MODULE OAK	1360£
WSFED006N CORNER MODULE WALNUT	1390£
WSFED007C ROUNDED MODULE OAK	1152£
WSFED007N ROUNDED MODULE WALNUT	1503£

DIMENSIONS

1 SEAT: W 960 H 760 D 1010MM

CHAISE LONGUE: W 960 H 760 D 1720MM

OTTOMAN: W 960 H 470 D 1010MM

CENTER MODULE: W 805 H 280 D 805MM

SIDE MODULE: W 805 H 280 D 250MM

CORNER MODULE: W 805 H 280 D 805MM

ROUNDED MODULE: W 630 H 280 D 840MM

CHAISE LONGUE	A	B	C	L
OAK	2463£	2849£	3527£	3842£
WALNUT	2557£	2943£	3621£	3936£


SET 1

INCLUDES
2*1 SEAT
2*SIDE MODULE

DIMENSIONS
TOTAL: W 2420 H 760 D 1010MM

CONSUMPTION
FABRIC: 8 M
LEATHER: 13,44 M²

PRICE COM
(WITHOUT FABRICS OR LEATHER)

OAK: 4540£
WALNUT: 4905£


SET 2

INCLUDES
2- 1 SEAT
1- CHAISE LONGUE
1- SIDE MODULE

DIMENSIONS
TOTAL: W 3130 H 760 D 1720MM

CONSUMPTION
FABRIC: 13,5 M
LEATHER: 22,69 M²

PRICE COM
(WITHOUT FABRICS OR LEATHER)

OAK: 5920£
WALNUT: 6243£


SET 3

INCLUDES
2*1 SEAT
2*CHAISE LONGUE
2*SIDE MODULE

DIMENSIONS
TOTAL: W 4340 H 760 D 1720MM

CONSUMPTION
FABRIC: 19 M
LEATHER: 31,92 M²

PRICE COM
(WITHOUT FABRICS OR LEATHER)

OAK: 8564£
WALNUT: 9070£


SET 4

INCLUDES
3*1 SEAT
1*CHAISE LONGUE
1*SIDE MODULE
1*CORNER MODULE

DIMENSIONS
TOTAL: W 3810 H 760 D 2140MM

CONSUMPTION
FABRIC: 17,5 M
LEATHER: 29,4 M²

PRICE COM
(WITHOUT FABRICS OR LEATHER)

OAK: 8917£
WALNUT: 9341£

*CUSTOMS FEES NOT INCLUDED

SOFAS



SET 5 ●●●

INCLUDES
4*1 SEAT
1*SIDE MODULE
1*CORNER MODULE

DIMENSIONS
TOTAL: W 2850 H 760 D 3100MM

CONSUMPTION
FABRIC: 16 M
LEATHER: 26,88 M²

PRICE COM
(WITHOUT FABRICS OR LEATHER)

OAK: 8543£
WALNUT: 8967£



SET 6 ●●●

INCLUDES
4*1 SEAT
1*CHAISE LONGUE
1*OTTOMAN
1*SIDE MODULE

DIMENSIONS
TOTAL: W 3840 H 760 D 3130MM

CONSUMPTION
FABRIC: 24,4 M
LEATHER: 40,99 M²

PRICE COM
(WITHOUT FABRICS OR LEATHER)

OAK: 10375£
WALNUT: 10911£



SET 7 ●●●

INCLUDES
4*1 SEAT
1*CHAISE LONGUE
1*OTTOMAN
1*SIDE MODULE
1*CORNER MODULE

DIMENSIONS
TOTAL: W 4770 H 760 D 3100MM

CONSUMPTION
FABRIC: 24,4 M
LEATHER: 40,99 M²

PRICE COM
(WITHOUT FABRICS OR LEATHER)

OAK: 11734£
WALNUT: 12299£



SET 8 ●●●

INCLUDES
2*1 SEAT
1*CHAISE LONGUE
3*OTTOMAN
2*SIDE MODULE

DIMENSIONS
TOTAL: W 3310 H 760 D 2730MM

CONSUMPTION
FABRIC: 22,2 M
LEATHER: 37,3 M²

PRICE COM
(WITHOUT FABRICS OR LEATHER)

OAK: 10090£
WALNUT: 10736£



SET 9 ●●●

INCLUDES
5*1 SEAT
1*CHAISE LONGUE
1*CENTER MODULE
1*SIDE MODULE
1*CORNER MODULE

DIMENSIONS
TOTAL: W 5575 H 760 D 3100MM

CONSUMPTION
FABRIC: 28,4 M
LEATHER: 47,71 M²

PRICE COM
(WITHOUT FABRICS OR LEATHER)

OAK: 13552£
WALNUT: 14147£



SET 10 ●●●

INCLUDES
3*1 SEAT
1*CHAISE LONGUE
3*OTTOMAN
1*CENTER MODULE
1*SIDE MODULE
1*CORNER MODULE

DIMENSIONS
TOTAL: W 4770 H 760 D 4895MM

CONSUMPTION
FABRIC: 26,2 M
LEATHER: 44,02 M²

PRICE COM
(WITHOUT FABRICS OR LEATHER)

OAK: 13814£
WALNUT: 14480£



SET 11 ●●●

INCLUDES
5*1 SEAT
2*OTTOMAN
1*CENTER MODULE
1*SIDE MODULE
1*CORNER MODULE

DIMENSIONS
TOTAL: W 4615 H 760 D 3100MM

CONSUMPTION
FABRIC: 25,8 M
LEATHER: 43,34 M²

PRICE COM
(WITHOUT FABRICS OR LEATHER)

OAK: 13899£
WALNUT: 14564£

TABLES



DINING TABLES



RAIA TABLE ●●

WOODEN LIGHT AND ELEGANT TABLE WITH FIXED TOP. AVAILABLE IN TWO DIFFERENT DIMENSIONS.

DESIGNER STUDIO GUD

REFERENCES

WMJGU001C OAK 1800
WMJGU001N WALNUT 1800
WMJGU002C OAK 2000
WMJGU002N WALNUT 2000

DIMENSIONS

W 1800 H 750 D 950MM
W 2000 H 750 D 1000MM

PRICE*

3912€
5765€
4222€
6178€



SOMA TABLE ●●

SOLID WOOD DINING TABLE WITH ELEGANT WOOD JOINERY DETAILS THAT UNDERLINES THE PERSONALITY OF THE TABLE. AVAILABLE IN THREE DIFFERENT DIMENSIONS.

DESIGNER CHRISTIAN HAAS

REFERENCES

WMJCH001C OAK 1800
WMJCH001N WALNUT 1800
WMJCH002C OAK 2400
WMJCH002N WALNUT 2400
WMJCH003C OAK 3000
WMJCH003N WALNUT 3000

DIMENSIONS

W 1800 H 750 D 1000MM
W 2400 H 750 D 1100MM
W 3000 H 750 D 1200MM

PRICE*

4376€
6692€
5559€
7413€
6880€
8481€



AMOS TABLE ●●

DINING TABLE WITH SOLID WOOD TOP AND CONICAL LEGS. AVAILABLE IN THREE DIFFERENT DIMENSIONS IN OAK OR WALNUT.

DESIGNER CHRISTIAN HAAS

REFERENCES

WMJCH004C OAK 1800
WMJCH004N WALNUT 1800
WMJCH005C OAK 2400
WMJCH005N WALNUT 2400
WMJCH006C OAK 3000
WMJCH006N WALNUT 3000

DIMENSIONS

W 1800 H 750 D 1000MM
W 2400 H 750 D 1100MM
W 3000 H 750 D 1200MM

PRICE*

5198€
6237€
5481€
6993€
6804€
8316€



ANCHOR TABLE ●●

LUXURIOUS DINING TABLE AVAILABLE IN THREE SIZES, FEATURING A SOLID WOOD TOP SUPPORTED BY TWO ROUNDED TRAVERTINE LEGS.

DESIGNER DAN YEFFET

REFERENCES

WMJDY002CT OAK 2000
WMJDY002NT WALNUT 2000
WMJDY003CT OAK 2400
WMJDY003NT WALNUT 2400
WMJDY004CT OAK 3000
WMJDY004NT WALNUT 3000

DIMENSIONS

W 2000 H 730 D 1000MM
W 2400 H 730 D 1100MM
W 3000 H 730 D 1200MM

PRICE*

17172€
21744€
19980€
23850€
21600€
26100€



VASCO TABLE ●●

ROUND TABLE WITH A STRUCTURE IN SOLID WOOD, SUPPORTED BY A CONICAL BASE, AND THREE OPTIONS FOR THE TOP: GLASS, MARBLE OR CERAMICS.

DESIGNER VARIAFORMA

REFERENCES

WMJVF001CV OAK GLASS (BRONZE)
WMJVF001NV WALNUT GLASS (BRONZE)
WMJVF001CC OAK CERAMICS
WMJVF001NC WALNUT CERAMICS

DIMENSIONS

Ø1500 H 750MM

PRICE*

4320€
5940€
4671€
5940€



NURIA EXTENDABLE TABLE ●●

AN EXTENDABLE DINING TABLE WITH A SOLID CONSTRUCTION THAT EXPANDS FROM 6 TO 10 SEATING PLACES.

DESIGNER GONÇALO CAMPOS

REFERENCES

WMJGC015C OAK
WMJGC015N WALNUT

DIMENSIONS

W 1800 + 2*600 H 750 D 1000MM

PRICE*

4356€
4896€

COFFEE/SIDE TABLES


KAYA COFFEE TABLE

A SOLID WOOD STRUCTURE WITH A MARBLE TOP AND BRASS DETAILS.

DESIGNER ÜMIT ÇAĞLAR

REFERENCES

REFERENCES	PRICE
WMCUC001C OVAL COFFEE TABLE OAK STANDARD MARBLE	1782£
WMCUC001N OVAL COFFEE TABLE WALNUT STANDARD MARBLE	2007£
WMCUC001CP OVAL COFFEE TABLE OAK PREMIUM MARBLE	2592£
WMCUC001NP OVAL COFFEE TABLE WALNUT PREMIUM MARBLE	2817£
WMCUC002C ROUND COFFEE TABLE OAK STANDARD MARBLE	1291£
WMCUC002N ROUND COFFEE TABLE WALNUT STANDARD MARBLE	1404£
WMCUC002CP ROUND COFFEE TABLE OAK PREMIUM MARBLE	1760£
WMCUC002NP ROUND COFFEE TABLE WALNUT PREMIUM MARBLE	1874£

DIMENSIONS

W 1448 H 320 D 788MM
W 838 H 420 D 838MM


ANCHOR COFFEE/SIDE TABLE

SET OF TABLES COMPRISING TWO SIDE TABLES AND A COFFEE TABLE, CRAFTED FROM A COMBINATION OF WOOD AND STONE.

DESIGNER DAN YEFFET

REFERENCES

REFERENCES	PRICE*
WMC DY001C TALL SIDE TABLE OAK	1980£
WMC DY001N TALL SIDE TABLE WALNUT	2790£
WMC DY001CT TALL SIDE TABLE TRAVERTINE/OAK	2376£
WMC DY001NT TALL SIDE TABLE TRAVERTINE/WALNUT	2790£
WMC DY002C SIDE TABLE OAK	1296£
WMC DY002N SIDE TABLE WALNUT	2025£
WMC DY002CT SIDE TABLE TRAVERTINE/OAK	1728£
WMC DY002NT SIDE TABLE TRAVERTINE/WALNUT	2025£
WMC DY003CT COFFEE TABLE TRAVERTINE/OAK	3510£
WMC DY003NT COFFEE TABLE TRAVERTINE/WALNUT	4176£

DIMENSIONS

W 625 H 530 D 485MM
W 530 H 450 D 412MM
W 1100 H 320 D 852MM


HEXA COFFEE /SIDE TABLE

SOLID WOOD COFFEE/SIDE TABLE. IT CAN BE USED VERTICAL, HORIZONTALLY OR AS A MODULAR SYSTEM ALLOWING IT TO FILL INTO DIFFERENT SPACES OR COMBINE DIFFERENT WOODS.

DESIGNER DANIEL VIEIRA

REFERENCES

REFERENCES	PRICE*
WMC DY001C OAK	1076£
WMC DY001N WALNUT	1319£

DIMENSIONS

W 545 H 355 D 630MM


MEMÓRIA COFFEE TABLE

COFFEE TABLE WITH IRON PIPES AND WOOD, BOTH ON BOTTOM AND TOP.

DESIGNER WEWOOD DESIGN CENTER

REFERENCES

REFERENCES	PRICE*
WMC WW003CF OVAL TABLE OAK VENEERED	4153£
WMC WW003NF OVAL TABLE WALNUT VENEERED	4533£

DIMENSIONS

W 2000 H 395 D 1200MM


CORNER COFFEE TABLE

MARBLE TOP TABLES WITH A STRUCTURE IN SOLID WOOD. AVAILABLE IN ROUND OR RECTANGULAR FORMS AND DIFFERENT TYPES OF WOOD AND MARBLE.

DESIGNER PIERRE DUBOURG

REFERENCES

REFERENCES	PRICE*
WMC PD001C ROUND TABLE OAK STANDARD MARBLE	2192£
WMC PD001N ROUND TABLE WALNUT STANDARD MARBLE	2538£
WMC PD001CP ROUND TABLE OAK PREMIUM MARBLE	3029£
WMC PD001NP ROUND TABLE WALNUT PREMIUM MARBLE	3240£

DIMENSIONS

Ø 1200 H 400MM

WMC PD002C RECTANGULAR TABLE OAK STANDARD MARBLE	2214£
WMC PD002N RECTANGULAR TABLE WALNUT STANDARD MARBLE	2502£
WMC PD002CP RECTANGULAR TABLE OAK PREMIUM MARBLE	2673£
WMC PD002NP RECTANGULAR TABLE WALNUT PREMIUM MARBLE	2952£

DIMENSIONS

W 1400 H 400 D 900MM

*CUSTOMS FEES NOT INCLUDED

COFFEE/SIDE TABLES



AMOS COFFEE/SIDE TABLE

SERIES OF TABLES AVAILABLE IN TWO DIFFERENT SIZES. COMPOSED BY A SOLID WOOD TOP AND A CONICAL BASE.

DESIGNER CHRISTIAN HAAS

REFERENCES

WMCCH001C MEDIUM TABLE OAK
WMCCH001N MEDIUM TABLE WALNUT
WMCCH002C LARGE TABLE OAK
WMCCH002N LARGE TABLE WALNUT

DIMENSIONS

W 800 H 350 D 800MM
W 1000 H 290 D 1000MM

PRICE*

1890€
2547€
2376€
2925€



RE-FORM COFFEE/SIDE TABLE

SERIES OF COFFEE AND SIDE TABLES OF DIFFERENT SIZES, DESIGNED TO PROVIDE UTMOST VERSATILITY AS EITHER STANDALONE PIECES OR ARTISTIC COMBINATIONS.

DESIGNER ALAIN GILLES

REFERENCES

WMCAG001C TALL SIDE TABLE OAK
WMCAG001N TALL SIDE TABLE WALNUT
WMCAG002C SIDE TABLE OAK
WMCAG002N SIDE TABLE WALNUT
WMCAG003C COFFEE TABLE OAK
WMCAG003N COFFEE TABLE WALNUT

DIMENSIONS

W 300 H 500 D 400MM
W 300 H 375 D 400MM
W 800 H 400 D 800MM

PRICE*

900€
1080€
810€
990€
1292€
1706€

BEDSIDE TABLES



DUPLEX BEDSIDE TABLE

SOLID WOOD BEDSIDE TABLE WITH A REDUCED AND MINIMAL GRAPHICAL STATEMENT.

DESIGNER CHRISTIAN HAAS

REFERENCES

WBTCH001C OAK
WBTCH001N WALNUT

DIMENSIONS

W 550 H 450 D 550MM

PRICE*

659€
1233€



TRIPLEX BEDSIDE TABLE

SOLID WOOD BEDSIDE TABLE BOASTING A RESTRAINED AND MINIMALISTIC VISUAL EXPRESSION, WITH THREE STORAGE LEVELS.

DESIGNER CHRISTIAN HAAS

REFERENCES

WBTCH002C OAK
WBTCH002N WALNUT

DIMENSIONS

W 550 H 450 D 550MM

PRICE*

932€
1521€



CRIADO-MUDO BEDSIDE TABLE

SOLID WOOD BEDSIDE TABLE WITH A PRACTICAL DRAWER AND A CONVENIENT TRAY IN ITS BASE.

DESIGNER WEWOOD DESIGN CENTER

REFERENCES

WBTWW001C OAK
WBTWW001N WALNUT

DIMENSIONS

W 500 H 550 D 400MM

PRICE*

1098€
1494€

STORAGE



STORAGE



BRUTALIST SIDEBOARD ●●

SIDEBOARD WITH TWO DOORS HOUSING ADJUSTABLE SHELVES WITHIN, ALONGSIDE MIDDLE DRAWERS, OFFERING AMPLE STORAGE POSSIBILITIES FOR A DIVERSE ARRAY OF ITEMS.

DESIGNER ERNO DIERCKX

REFERENCES

WAPED001C OAK 1850
WAPED001N WALNUT 1850
WAPED002C OAK 2400
WAPED002N WALNUT 2400

DIMENSIONS

W 1850 H 640 D 450MM
W 2400 H 640 D 450MM

PRICE*

4540€
5569€
5729€
7160€



SCARPA SIDEBOARD ●●

SIDEBOARD IN SOLID WOOD WITH TWO HIDDEN DRAWERS AND FOUR DIVISIONS DIVIDED BY ADJUSTABLE SHELVES. THE DETAILS ON THE DOORS ARE ASSEMBLED BY HAND.

DESIGNER WEWOOD DESIGN CENTER

REFERENCES

WAPWW201C OAK
WAPWW201TN WALNUT

DIMENSIONS

W 1860 H 840 D 450MM

PRICE*

4727€
5927€



CAROUSEL SIDEBOARD ●●

SIDEBOARD WITH SOLID WALNUT FRAME WITH MARBLE TOP AND A TURNTABLE BAR IN THE MIDDLE.

DESIGNER LEONHARD PFEIFER

REFERENCES

WAPLP401CM OAK STANDARD MARBLE
WAPLP401NM WALNUT STANDARD MARBLE
WAPLP401CMP OAK PREMIUM MARBLE
WAPLP401NMP WALNUT PREMIUM MARBLE

DIMENSIONS

W 2050 H 810 D 580MM

PRICE*

8471€
9538€
9420€
10596€



RADIO MEDIA UNIT ●●

MEDIA UNIT IN SOLID WOOD WITH PERFORATED SLIDING DOORS AND HOLES IN THE BACK THAT ALLOWS ITS USE CLOSED KEEPING THE DEVICES HIDDEN.

DESIGNER WEWOOD DESIGN CENTER

REFERENCES

WAPWW203C OAK
WAPWW203N WALNUT

DIMENSIONS

W 1600 H 470 D 400MM

PRICE*

2059€
2761€



MISTER SIDEBOARD

VERSATILE PIECE WITH A STRUCTURE AND DOOR IN SOLID WALNUT. HERRINGBONE PATTERN IN THE DOOR IN SOLID OAK. FULLY ADJUSTABLE INTERIORS THAT CAN BE TURNED INTO A BAR, A DESK OR SIMPLY A SIDEBOARD.

DESIGNER DANIEL DUARTE

REFERENCE

WAPDD101N

DIMENSIONS

W 800 H 1230 D 350MM

PRICE*

4895€

STORAGE


TOUCH CHEST OF DRAWERS ●●

SIDEBOARD WITH EXTERIOR IN SOLID WOOD AND INTERIOR IN NATURAL VENEERED MDF. BASE MADE OF IRON WITH MATTE ELECTROSTATIC PAINT.

DESIGNER SURICATA DESIGN STUDIO

REFERENCES

WAPSD101C OAK
WAPSD101N WALNUT

DIMENSIONS
W 545 H 1475 D 545MM

PRICE*

6084£
8096£


CONTADOR II SIDEBOARD ●●

SOLID WOOD TIMELESS PIECE THAT PROVIDES A PRACTICAL STORAGE SPACE. IT IS COMPOSED BY DRAWERS OF DIFFERENT DIMENSIONS DOORS, A TRAY AND A LOWER SHELF.

DESIGNER WEWOOD DESIGN CENTER

REFERENCES

WAPWW305C OAK
WAPWW305N WALNUT

DIMENSIONS
W 885 H 1460 D 370MM

PRICE*

5335£
6084£


CONTADOR SPECIAL SIDEBOARD ●●

10TH ANNIVERSARY SPECIAL EDITION OF CONTADOR SIDEBOARD WITH BRASS AND LEATHER DETAILS. LIMITED TO 10 UNITS.

DESIGNER WEWOOD DESIGN CENTER

REFERENCES

WAPWW306N WALNUT

DIMENSIONS
W 885 H 1460 D 370MM

PRICE*

7001£

MATERIALS & COLORS

The choice of the materials, fabrics and colors is what gives each piece its expression and plays an important role in the interior design project.

Along with our collection, we have our own selection of materials like wood and marble as well as a selection of different types of leather and fabrics.

You can select from a large variety of colors, materials and finishes to tailor our pieces and adapt it to the look and feel of different spaces.

Due to typographical and computer screens variations, we cannot guarantee that colors shown here are truly representative of our products.

Prior to purchasing, please contact us. We recommend that you order a single sample of any material or purchase a box with all the materials.

WOOD



WOOD

OAK | NATURA



OAK | WHITE OIL



OAK | SMOKED OPEN PORE



WOOD

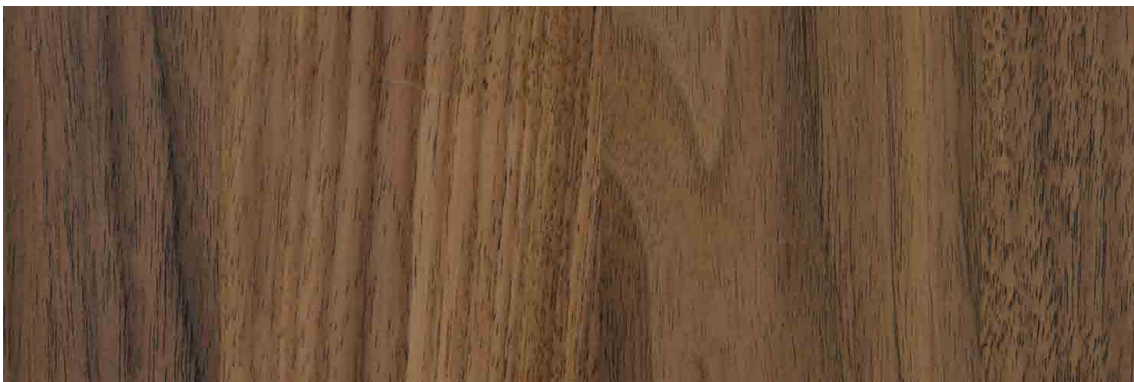
OAK | GOLDEN BROWN



WALNUT | NATURA



WALNUT | UV PROTECT



RUA D. AFONSO HENRIQUES 77 GANDRA, APARTADO 10
4589 - 907 REBORDOSA PORTUGAL
T +351 224 114 050 | M +351 932 492 434

WWW.WEWOOD.EU | INFO@WEWOOD.EU

MARBLE | STONE



MARBLE

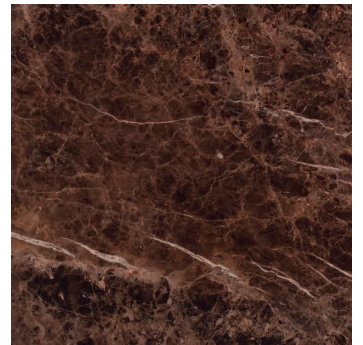
STANDARD MARBLE



ESTREMOZ



NERO MARQUINA



EMPERADOR

PREMIUM MARBLE



CALACATTA

STONE



TRAVERTINE

*ONLY AVAILABLE FOR LILY TABLES

RUA D. AFONSO HENRIQUES 77 GANDRA, APARTADO 10
4589 - 907 REBORDOSA PORTUGAL
T +351 224 114 050 | M +351 932 492 434

WWW.WEWOOD.EU | INFO@WEWOOD.EU

FABRICS

GROUP A



FABRICS | GROUP A

CAMPO

Composition 90% PL | 10% PC

Width 140cm | 55,12"

Martindale 145 000

Flame Resistance BS5852-0 (UK)

More Features Water repellent



TAALCAMPO02



TAALCAMPO03



TAALCAMPO05



TAALCAMPO09



TAALCAMPO13



TAALCAMPO14



TAALCAMPO15



MORE COLOURS

CHALET

Composition 100% PL

Width 140cm | 55,12"

Martindale 50 000

Flame Resistance BS5852-0 (UK)

More Features Water repellent



TAALCHALET01



TAALCHALET02



TAALCHALET03



TAALCHALET13



TAALCHALET16



TAALCHALET18



TAALCHALET19



MORE COLOURS

FABRICS | GROUP A

AMADEUS

Composition 22% PC | 22% WV | 22% PL | 14% VI | 13% CO | 7% LI

Width 140cm | 55,12"

Martindale 30 000

Flame Resistance BS5852-0 (UK) | EN1021-1 (EU) | NFPA260 (USA)

More features Natural fibers



TAELEMADEUS0025



TAELEMADEUS0225



TAELEMADEUS0520



TAELEMADEUS0762



TAELEMADEUS0855



TAELEMADEUS1534



MORE COLOURS

MADISON

Composition 63% CO | 37% LI

Width 140cm | 55,12"

Martindale 32 500

Flame Resistance BS5852-0 (with FR foam) (UK)

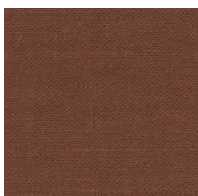
More Features Natural fibers



TADTMADISON12035



TADTMADISON12053



TADTMADISON12132



TADTMADISON12143



TADTMADISON12151



TADTMADISON24196



TADTMADISON24197



TADTMADISON24251



MORE COLOURS

FABRICS | **GROUP A**

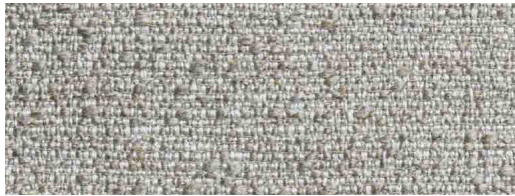
ALMO

Composition 78% PL | 10 % PC | 7% LI | 5% WO

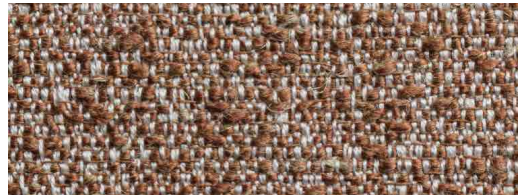
Width 140cm | 55,12"

Martindale 100 000

Flame Resistance BS5852-0 (UK)



TAALALMO03



TAALALMO05



TAALALMO06



TAALALMO09



MORE COLOURS

FABRICS | GROUP A

WAIKIKI

Composition 100% PL

Width 140cm | 55,12"

Martindale 35 000

Flame Resistance N/A

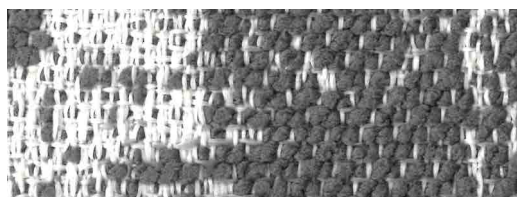
More Features Water and oil repellency | Antibacterial



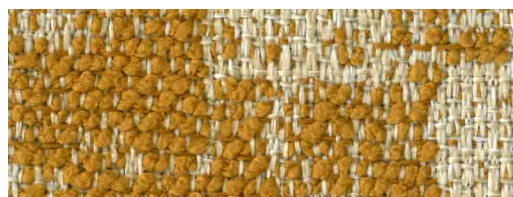
TAAFWAIKIKIBLANCO



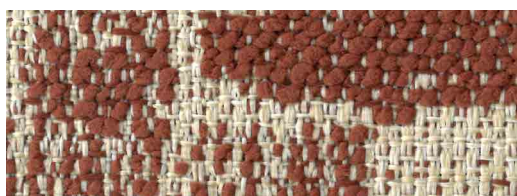
TAAFWAIKIKIARENA



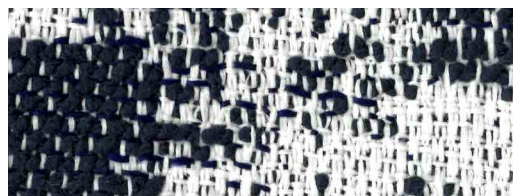
TAAFWAIKIKIALUMINIO



TAAFWAIKIKIMOSTAZA



TAAFWAIKIKITEJA



TAAFWAIKIKIMARINO

FABRICS

GROUP B



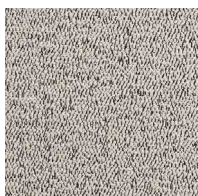
FABRICS | GROUP B

LOOP LOOP

Composition 28% PL | 25% PC | 24% WO | 23% rCO
Width 140cm | 55,12”
Martindale 52 000
Flame Resistance BS5852-0 (UK) | TB 117-2013 (USA)
More Features Natural fibers



TBDDLOOPLOOP002



TBDDLOOPLOOP005



TBDDLOOPLOOP008



MORE COLOURS

MOLERA

Composition 44% CO | 30% PES | 17% LI | 5% BAMB | 4% PA
Width 136cm | 53,54”
Martindale 40 000
Flame Resistance N/A



TBDMOLERA001



TBDMOLERA002



TBDMOLERA005



TBDMOLERA007



MORE COLOURS

KYRI

Composition 63% VI | 27% LI | 7% PL | 3% PA
Width 140cm | 55,12”
Martindale 40 000
Flame Resistance BS5852-0 (UK) | CAL 117 (USA) | EN1021-1 (EU) | NFPA260 (USA) | TB 117-2013 (USA)
More Features Reach compliant | PFAS free



TBROKYRI09



TBROKYRI12



TBROKYRI21



TBROKYRI39



MORE COLOURS

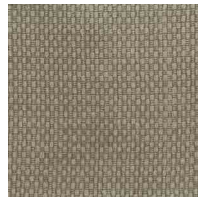
FABRICS | GROUP B

LORTON

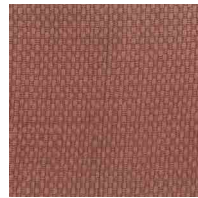
Composition 100% rPET
Width 144cm | 56,69"
Martindale 48 000
Flame Resistance BS5852-0 (UK)



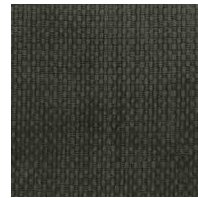
TBOLLORTON01



TBOLLORTON04



TBOLLORTON05



TBOLLORTON12



MORE COLOURS

TÁLIO

Composition 42% CO | 38% VI | 15% PL | 5% LI
Width 140cm | 55,12"
Martindale 25 000
Flame Resistance N/A



TBPOTALIO01



TBPOTALIO02



TBPOTALIO03



TBPOTALIO04



TBPOTALIO05



TBPOTALIO06



TBPOTALIO07

FABRICS | GROUP B

SIÈGE

Composition 100% CO

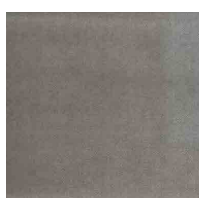
Width 140cm | 55,12”

Martindale 40 000

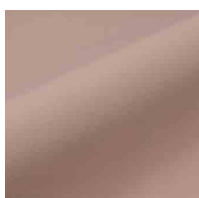
Flame Resistance N/A (FR TREATMENT AVAILABLE, SUBJECT TO INQUIRY)



TBALSIEGE0043



TBALSIEGE0083



TBALSIEGE1601



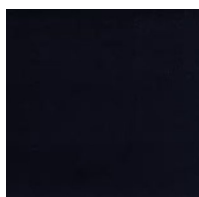
TBALSIEGE0452



TBALSIEGE0166



TBALSIEGE7033



TBALSIEGE0668



TBALSIEGE0881



MORE COLOURS

FABRICS

GROUP C



FABRICS | GROUP C

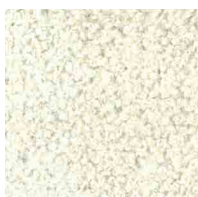
SYCOMORE

Composition 32% AC | 19% CO | 17% VI | 8% LI | 7% ALP | 7% VW | 6% PL | 3% PO | 1% EL

Width 140cm | 55,12"

Martindale 30 000

Flame Resistance BS5852-0 (UK) | EN1021-1 (EU) | NFPA260 (USA) | TB 117-2013 (USA)



TCPFSYCOMORE001



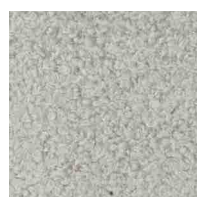
TCPFSYCOMORE002



TCPFSYCOMORE003



TCPFSYCOMORE004



TCPFSYCOMORE005



TCPFSYCOMORE006

EMBER

Composition 60% PL | 40% PC

Width 140cm | 55,12"

Martindale 100 000

Flame Resistance CAL 117 (USA) | EN1021-1 (EU) | NFPA260 (USA)



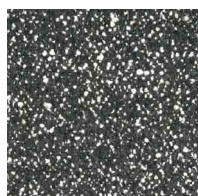
TCKDEMBER01



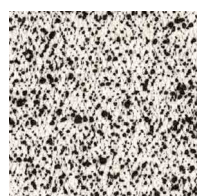
TCKDEMBER02



TCKDEMBER03



TCKDEMBER04



TCKDEMBER05



TCKDEMBER07



MORE COLOURS

FABRICS | **GROUP C**

KUBA

Composition 60% VI | 40% CO

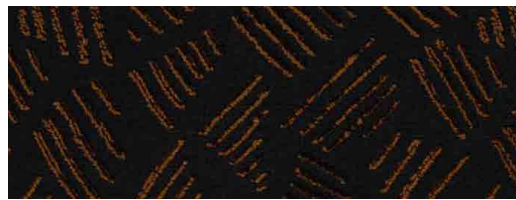
Width 138 cm | 54,33"

Martindale 50 000

Flame Resistance FFFSR 1988 (UK)



TCLKUBA01



TCLKUBA03



TCLKUBA04



TCLKUBA05



MORE COLOURS

FABRICS | GROUP C

SAPPHEO

Composition 46% VI | 21% WO | 21% PC | 12% PA

Width 142cm | 55,91"

Martindale 25 000

Flame Resistance CAL 117 (USA) | EN1021-1 (EU) | NFPA260 (USA)

More Features Special finish: anti-shrink, anti-pilling dimout option on request



TCZCSAPPHEO001



TCZCSAPPHEO002



TCZCSAPPHEO003



MORE COLOURS

LEATHER



LEATHER

TEXTURE

Composition 100% LH

Width 5,0m²

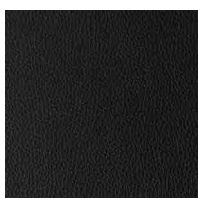
Martindale 50 000

Pilling N/A

Flame Resistance BS5852-0 (UK) | EN1021-1 (EU)



LELTEXTURE6203



LELTEXTURE6207



LELTEXTURE6212



LELTEXTURE6213



LELTEXTURE6228



LELTEXTURE6241



LELTEXTURE6252



LELTEXTURE6258



LELTEXTURE6293



MORE COLOURS

LEATHER

PLAIN

Composition 100% LH

Width 5,0m²

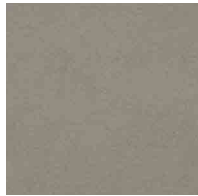
Martindale 50 000

Pilling N/A

Flame Resistance BS5852-0 (UK) | EN1021-1 (EU)



LELPLAIN24003



LELPLAIN24009



LELPLAIN24017



LELPLAIN24018



LELPLAIN24021



LELPLAIN24024



LELPLAIN24025



LELPLAIN24027



LELPLAIN24029



MORE COLOURS

GENERAL TERMS AND CONDITIONS

BY ORDERING WEWOOD PRODUCTS YOU ARE AGREEING TO ABIDE BY THESE TERMS AND CONDITIONS:

PURPOSE AND DEFINITION

These Terms and Conditions define the collaboration between Wewood – Portuguese Joinery, hereinafter referred to in this document as “Wewood”, and the Reseller or customer.

These Terms and Conditions take precedent over any oral or written agreement, quote, order confirmation, or invoice.

The term Reseller is used in this document to describe a company which buys products from Wewood with the purpose of reselling them to a Customer. Any Reseller must obtain written permission to sell Wewood products. These Terms and Conditions define the Reseller’s non-exclusive rights to sell Wewood products in a limited geographical area as agreed with Wewood. In addition, a written confirmation must be issued by Wewood specifying the right to sell Wewood products online.

Resellers offering Wewood products online are regulated by additional Terms and Conditions for e-commerce as specified in this document.

The term Customer used in this document is intended to describe a person or company purchasing Wewood products from the Reseller or directly to Wewood.

COMMERCIAL RESTRICTIONS

Wewood is a high-end design brand which requires all Resellers to present the brand and our products in accordance with high standards of similar high-end design brands. Wewood will continuously assess the Reseller both qualitatively and quantitatively to evaluate and determine the Reseller’s continued right to represent the brand and sell Wewood products.

The Reseller shall comply with all applicable laws, rules and regulations of government and other bodies, both nationally and internationally, including classifications requirements, laws, rules and any other regulations or policies which apply in the location where the sales, services and operational work is performed by the Reseller.

The Reseller has the right to sell only the products listed in Wewood Price List. Wewood reserves the right to discontinue products at any point in time. See Wewood website for reference.

INTERNATIONAL DISTRIBUTION

The Reseller can actively promote and resell Wewood products internationally only as agreed with Wewood in writing, and only from the country where the Reseller’s legal entity is officially registered.

Resellers are not allowed to actively promote and resell Wewood products in markets serviced by exclusive distributors.

If the Reseller maintains subsidiaries, or establishes or acquire separate legal entities in other countries than the country where the Reseller’s legal entity is officially registered, including third party subcontractors, these new entities have to be separately approved as a Reseller in writing by Wewood before any exhibit, promotion, or resale of Wewood products may occur. Wewood withholds the full right to refuse to accept trade with such entities.

PRICES

Each stated price corresponds to a single piece. The price of Wewood products follow the current Price List at any time. Note that all prices are periodically subject to change.

Unless otherwise stated, all prices in any quotation or order confirmation are exclusive of shipping and VAT. See Wewood Shipping Terms & Conditions for further details.

Where no price has been quoted, or a quoted price is no longer valid, or errors have been made in the quotation or order confirmation, the price listed in Wewood Price List at the time of the order acceptance date will be the valid price of the product.

For more information, please get in touch with our sales department.

ORDER AND ORDER CONFIRMATION

All orders must be sent to Wewood by email, and have the complete information on the selected product(d) and its/their finishing's.

Once an order/quote request is placed by the Reseller/ Customer, an order confirmation/quote will be sent to the Reseller/ Customer no later than two (2) working days after receiving the order in writing. The order confirmation includes item specification, price, name of the Reseller/Customer, payment terms, delivery terms, delivery address and pickup /delivery date. No order is valid until the written order confirmation is issued by Wewood. Any date indicated on any order confirmation is to be considered as an estimate only, and Wewood has no liability related to any change in the indicated delivery dates.

The Reseller/Customer is responsible for verifying all order confirmations issued by Wewood and must inform Wewood of any changes to the order, or errors in the order confirmation, within one (1) working day after receiving the order confirmation, otherwise the order will be effectuated. Specific shipping terms vary depending on which country the order is related to. See Wewood Shipping Terms & Conditions for further details.

The Reseller/Customer is obligated to inform Wewood without any delay if changes occur to any relevant company data, such as company name, registration number, contact details, shipping or payment addresses.

PAYMENT

All orders, unless otherwise agreed upon in writing between the Reseller/Customer and Wewood in advance, are subject to prepayment prior to delivery. A deposit of 50% of the value shall be made in order to start production. Wewood reserves the right to require a 100% advance payment. All items are Wewood property until the total amount of the order is received.

The bank details and other relevant information for payment purposes will displayed at all times at the order confirmation/quote.

PRODUCTION AND LEAD TIME

Wewood will start the production of the order when the agreed amount is effectively paid and confirmed. Although the standard production time for Wewood products is eight (8) weeks, each order confirmation will indicate its particular lead time. Orders with large amounts and/or bespoke pieces may be subject to specific lead times, that shall be negotiated between Wewood and the Reseller/Customer before the order is placed.

MATERIALS

Wewood products offer a selected range of materials, that can be found on the following link: <https://materials.wewood.eu>

FABRICS

A. While trying to keep the network of suppliers updated, Wewood can't be held responsible for any shortage of stock or delays from the fabric suppliers. If any of the situations occur, Wewood will inform the Reseller/Customer immediately and allow for the replacement of the fabric.

B. COM: when the Reseller/Customer decides to use COM (client own material) for the upholstered pieces on Wewood catalogue, a sample of 20x20cm shall be sent to Wewood address for review and approval. Wewood reserves the right to deny working with fabrics that are deemed not suitable for Wewood upholstery standards.

All fabrics beside our curated selection are considered COM.

A shipping tax is charged to each requested fabric, as we do not keep fabric stocks.

CANCELLATION AND RETURN OF GOODS

No confirmed order by Wewood can be cancelled by the Reseller/Customer without a written approval from Wewood. If no written approval of order cancellation is issued by Wewood, the Reseller/Customer is accountable for the order and shall indemnify Wewood in full against all losses (such as order value, indirect costs, other charges and expenses incurred) as a result of any such cancellation, even if products are not yet delivered.

No product can be returned to Wewood without a written agreement with Wewood. Any product returned by the Reseller/Customer without prior confirmation from Wewood, and through no fault of Wewood's, will be subject to billing of all related losses (such as order value, indirect costs, damages, other charges and expenses incurred). Returned goods by postal claim to Wewood will not be collected or paid for by Wewood.

Product items made specifically for each client, defined and marked by Wewood as *Made-to-order* items, as well as any customized items, may not be cancelled or returned under any circumstance.

SHIPPING TERMS & CONDITIONS

PACKAGING

All orders are shipped in a triple wall card box tailor-made for each piece of furniture. Before packing, all the pieces are protected by polyethylene foam. If you wish a premium packaging for your order (Plywood Box), please contact our sales department before placing your order.

SHIPPING COSTS

- A. For some particular countries and from some minimum amount, Wewood will offer to ship the goods without any additional costs.
- B. For some other countries, Wewood will offer to ship the goods against payment for that service. The cost of that transport will be added to quote and must be paid accordingly by the Reseller/Customer.
- C. If the above a) and b) don't apply to the order, the incoterms applied are EXWORKS. The items will be packed accordingly and shall be collected by the carrier of choice of the Reseller/Customer. When these terms apply, the goods are considered in possession of the Reseller/Customer when the pick-up of order is completed, and therefore Wewood holds no liability for any damages occurred from that moment on, either in transit or unloading at final destination.
- D. Additional fees may incur if the Reseller or the Customer require additional documentation or services other than the standard Wewood Order Confirmation/quote, such as, but not limited to, custom packaging or labelling data, or other formats that are not standard to Wewood, or export documents, such as Country of Origin documentation.
- E. The order confirmation/quote from Wewood specifies which delivery terms apply for each specific order.

DELIVERY CONDITIONS FOR A) AND B)

The standard delivery (either complimentary or with costs for the Reseller/Customer) is made to ground floor only, and outside of the property.

The physical product must be inspected upon delivery by the Reseller/Customer.

For visible damages, defects, or incorrect type or quantity identified on arrival, the Reseller/Customer is responsible for obtaining a signed damage declaration / deviation report from the transporter for the claim to take effect. Such deviations must also be reported to Wewood no later than two (2) working days after delivery together with a copy of the signed transporter damage declaration.

Wewood is not responsible for any damage or defect caused by the Reseller or Customer after the item is delivered from Wewood, including damages or defects caused in storage, transportation, display, or handling.

For more information, please get in touch with our sales department.

COMPLAINTS

Product errors must be reported immediately after they are identified by the Reseller or the Customer. Photos, damage description and product batch information must always be included in the claims reporting to Wewood. Local consumer laws regulating warranty and claims may apply.

Wewood undertakes to remedy all defects and deficiencies which are due to production by either repairing or exchanging the goods if such defects become apparent Within one year of the date of delivery to the Reseller/Customer.

Small knots, stripes, colour differences, marked and faint rings of wood grains are signs of genuineness and are not regarded as defects or deficiencies. Inappropriate use and the like are not covered by the right to complain.

Complaints must be made in writing and sent to the e-mail info@wewood.eu and must include a detailed description of the defect/deficiency with accompanying photos. Wewood will assess each individual complaint and may request for this purpose that the product must be returned for assessment for the Reseller/Customer own account. if the complaint is justified, the defect or deficiency will be repaired or the product exchanged.

Failure to comply with these requirements means that the right to complain will be forfeited. The Reseller/Customer bears the risk for the goods being stored under normal storage conditions for furniture and for the condition of the goods during storage.

GUARENTEE

A standard production guarantee of one (1) year applies to all products from Wewood, unless local laws, regulations, or specific agreements regarding particular orders stipulate otherwise.

Warranty conditions apply only to standard products that have not been reworked or modified by the user, the Customer, or the Reseller.

RESTRICTIONS

None of the parties have the authority to act on the other party's behalf, nor to engage in any commitment toward any third party on the other's behalf.

Wewood has the right to change construction, materials, weight, and any other measurements of products without any prior notice, as long as this does not significantly change the product. The Wewood website is the point of reference for any correct updated and valid product specifications.

Any typographical, clerical or otherwise, error or omission in any official Wewood sales literature, quotation, Price List, acceptance of offer, invoice, or any other document or information issued by Wewood shall be subject to ongoing correction without any liability on the part of Wewood.

All images, renderings, and descriptions of products, including colours and materials presented by Wewood on any of its platforms are indicative. Variations in colours and material nuances naturally vary over time and in use.

RIGHTS PROTECTION

Products from Wewood, including any drawings, specifications, product or material design elements, patents, trademarks, market related material and/or know-how are owned by Wewood, and shall remain Wewood's property, throughout and after termination of the business relationship between Wewood and the Reseller.

RUA D. AFONSO HENRIQUES 77 GANDRA, APARTADO 10
4589 – 907 REBORDOSA PORTUGAL
T +351 224 114 050 | M +351 932 492 434

WWW.WEWOOD.EU | INFO@WEWOOD.EU

CONFIDENTIALITY

The parties may not under any circumstance distribute or reveal matters of vital interest or any confidential information to a third party during or after the business relationship between Wewood and the Reseller.

DISPUTES

This contract shall be governed by, and interpreted, in accordance with Portuguese law and the Portuguese courts shall have jurisdiction to resolve any disputes between Wewood and the Reseller/Customer.

Any legal disputes between the parties should be solved through direct negotiations. If direct negotiations do not solve the dispute, legal mediators, Portuguese law, and the Portuguese courts may be used.

CURRENCY AND EFFECTIVE DATE

THIS PRICE LIST IS VALID FROM 20.04.2026 AND CANCELS ALL PRIOR PRICE LISTS.

ADDITIONAL TERMS AND CONDITIONS FOR E-COMMERCE

Unless otherwise expressly agreed in writing, all sales are subject to the following Terms and Conditions specific to online sales, in addition to the above General Terms and Conditions.

Notwithstanding any other provision of the contract, nothing in the contract confers or purports to confer any right to enforce any of its terms on any person or third party who is not a party to it.

OBLIGATIONS OF THE RESELLER

The Reseller cannot promote or resell Wewood products on any other website than the official Reseller website approved by Wewood. Any website for the distribution of Wewood products must be approved by Wewood prior to launching. The Reseller cannot promote or resell Wewood products on any third-party online store such as eBay, Amazon, or the like.

Wewood expects the Reseller to sustain the same level of brand knowledge, product knowledge, technical knowledge, after service competencies, and to provide the same level of service towards the Customer, as one can expect from any physical Wewood retailer or distribution partner.

The functionality on the Reseller's website must be at a satisfactory level compared to the industry standard, or other relevant benchmarks. The domain name must correspond to the Resellers brand name so that the Customer can easily identify that the Reseller is the brand owner of the website.

The Reseller can maintain a subdomain branded as a specific Wewood subdomain or Wewood product domain of the Reseller's website if it is approved by Wewood in writing. Any product names of Wewood products are the property of Wewood alone. The Reseller cannot use these names in a way that it can look like they belong to the Reseller and the name should always be displayed together with and in conjunction to the Wewood brand name and brand logo. Examples of such names are: Scarpa, Bowie, Metis, etc.

The Reseller must continually update websites with the most recent Wewood logo and brand name, all relevant marketing material, product information, prices, product images and product names, reflecting the current product names, product description and technical specifications and an updated presentation of the overall product portfolio.

The Reseller can only display official brand and product images that are supplied by Wewood, unless otherwise has been agreed in writing. All materials not provided by Wewood should be approved by Wewood prior to publishing on the Resellers' website.

Without compromising the Resellers' right to set their own prices, Wewood expects that the Reseller follows the Recommended Retail Price List (RRPL) from Wewood at any time. Within the EU, the price difference between Resellers in the member-states should be caused only by the different local taxes.

The Reseller cannot present the discount on the product as the main online content. It can't also proceed with sales, promotions or any decrease on the RRPL without Wewood consent. The Reseller cannot present unjustifiable higher prices than the ones on the RRPL without proper reason and Wewood consent.

The quality and design of the Wewood brand and products shall be the main content in the online presentation and marketing of Wewood products. The Reseller is responsible to comply with any legal requirements, data protection laws, e-commerce laws, and any other current legal requirements protecting the Customer. The Reseller is responsible for protecting the Customers online payment in a way that complies with current online payment security standards.

RUA D. AFONSO HENRIQUES 77 GANDRA, APARTADO 10
4589 – 907 REBORDOSA PORTUGAL
T +351 224 114 050 | M +351 932 492 434

WWW.WEWOOD.EU | INFO@WEWOOD.EU





All market communication, including all claims handling or after sales communication with the Customer, shall be handled by the Reseller only and not by Wewood. Transportation of goods, including transport prices, choice of transport price models, delivery information, and information about delays towards the Customer is solely a matter between the Reseller and the Customer.



WEWOOD

PORTUGUESE JOINERY

DAILY INSPIRATION

-  [wewoodportuguesejoinery](#)
-  [wewoodportuguesejoinery](#)
-  [wewoodportuguesejoinery](#)
-  [company/wewoodportuguesejoinery](#)

www.wewood.eu
info@wewood.eu
[#wewoodportuguesejoinery](#)

Rua D. Afonso Henriques, 77
4585 - 322 Gandra - Portugal

GPS N41°10'21.44" W8°26'20.07"

T. +351 224 114 050
M. +351 932 492 434